

# Michael Ertle's Mini Cooper R53 Airbox Mod installation Instructions



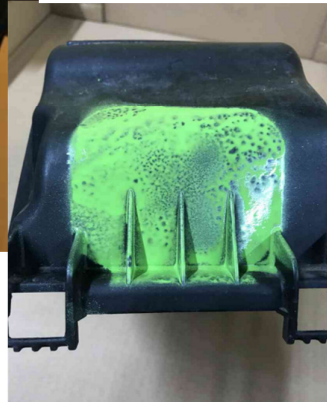
1. Original Firewall trim
2. Original Airbox Lid
3. Firewall Template (supplied)
4. Lid Template (supplied)
5. Port for Lid (supplied)



Mark the inner Edge of the template and cut it out within a Dremel or something similar



The easiest way to mark the Lid is with spray paint – mark it and cut it when dry





You should now have 2 parts like this



You can use some Bondo/filler to make the transition smooth between the 2 parts

Place the Port for lid (5) into the hole cut in the Original Airbox Lid (2) and stick together. Recommendation is a 2K Adhesive special for PETG / PUR or Tiger Seal



It is recommended you use a 10x10mm foam gasket (not supplied) to seal the Lid Port(5) to the firewall(1)

If the templates are returned undamaged, a refund of £5 will be made back to the account in which the item was paid for. Return the templates to: Mark Paterson, 53 Chesham Road, Bovingdon, Hemel Hempstead, HP30EA

Roadie Designs Ltd accepts no responsibility for, and are not liable for any damage to your car or person/persons caused through use of products or services purchased through Roadie Designs Ltd, be it indirect, special, incidental or consequential damages. If you have any questions regarding the terms of use outlined here, please do not hesitate to contact us at [www.roadiedesigns.co.uk/contact](http://www.roadiedesigns.co.uk/contact)